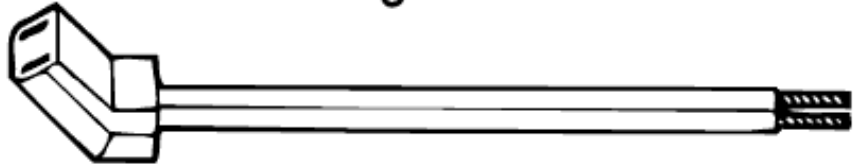


FAN CORDS

ABLE Part No.	Wire Type	Conductor			Length		Nominal OD		Fig
		AWG	Strand	Cond . Colors	Feet	Mtrs.	IN	MM	
2 CONDUCTOR OPEN END -45 ANGLE PLUG 105°C VW-1									
2045-002-BL	SPT-1	1812	41x34	Black	2	0.60	.106/.203	2,69/5,16	1
2045-003-BL	SPT-1	18/2	41x34	Black	3	0.90	.106/.203	2,69/5,16	1
2045.006-BL	SPT-1	18/2	41x34	black	6	1.80	.106/.203	2,69/5,16	1
2 CONDUCTOR OPEN END - RIGHT ANGLE PLUG 1050°C VW-1									
2055-002-BL	SPT-1	18/2	41x34	Black	2	0.60	.106/.203	2,69/5,16	2
2055-003-BL	SPT-1	18/2	41x34	Black	3	0.90	.106/.203	2,69/5,16	2
2055-006-BL	SPT-1	18/2	41x34	Black	6	1.80	.106/.203	2,69/5,16	2
2055-008-BL	SPT-1	18/2	41x34	Black	8	2.40	.106/.203	2,69/5,16	3
2055-010-BL	SPT-1	18/2	41x34	Black	10	3.00	.106/.203	2,69/5,16	3
2 CONDUCTOR OPEN END - STRAIGHT PLUG 105°C VW-1									
2056-002-BL	SPT-1	18/2	41x34	Black	2	0.60	.106/.203	2,69/5,16	4
2 CONDUCTOR JUMPER CORD - RIGHT ANGLE PLUG 105°C VW-1									
2053-012-BL	SPT-1	18/2	41x34	Black	1	0.30	.106/.203	2,69/5,16	5
2 CONDUCTOR FAN CORD WITH AC PLUG* 105 C°VWI									
2060-006-BL	SPT-1	18/2	41x34	Black	6.20	1.90	.106/.203	2,69/5,16	6
2060-008-BL	SPT-1	18/2	41x34	Black	8	3.40	.106/.203	2,69/5,16	6
2060-010-BL	SPT-1	18/2	41x34	Black	10	3.00	.106/.203	2,69/5,16	6
*NON-POLARIZED NEMA 1-15P PLUG									

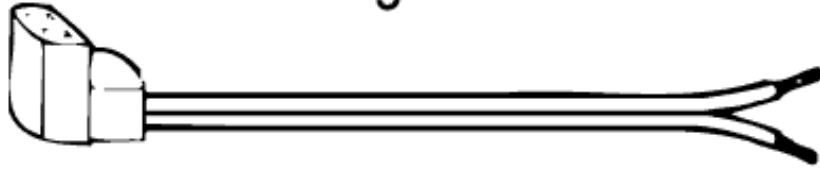
Figure 1



Plug #164-2-077 Slit 3/4" Strip 1/2"



Figure 2



Plug #80-2-077 Slit 3/4" Strip 1/2"



Figure 3

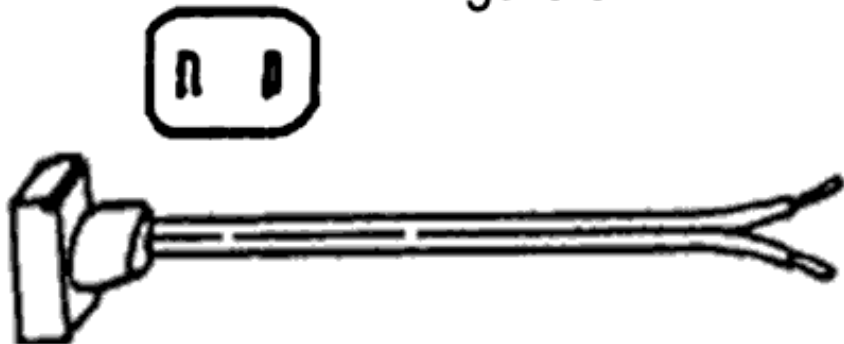
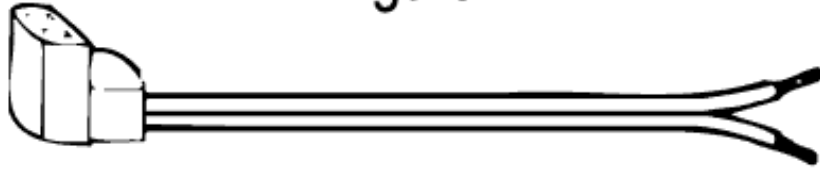


Figure 4



Plug #80-2-077 Slit 3/4" Strip 1/2"



Figure 5



Plug #80-2-077

Plug #80-9-077



Figure 6

